

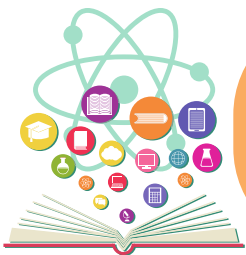
# ANNUAL IMPLEMENTATION PLAN SUMMARY

## GOAL 1

In 2023 we will continue to focus on student learning and student wellbeing through the 2023 Priorities Goal, a learning Key Improvement Strategy and a wellbeing Key Improvement Strategy.

## 12 MONTH TARGETS

- Increase the percentage of children recording in-level or next-level growth as measured by CASLLS/ASMAC, Early ABLES, ABLES, and Vic Curriculum, and/or other assessment tools as appropriate.
- Develop programs to support positive behaviour management and promote emotional regulation.
- Strengthen FPM model to enable the wellbeing needs of the child within the family to be identified and well supported.
- Strengthen processes that support vulnerable and disengaging children and families.



### **KIS 1 A: LEARNING**

Support both those who need scaffolding and those who have thrived to continue to extend their learning.



### **KIS 1 B: WELLBEING**

Effectively mobilise available resources to support students' wellbeing and mental health, especially the most vulnerable

### **ACTIONS:**

#### **Early Intervention**

1. Schedule and organise professional learning, reflection and supervision on strengthening understanding and fidelity of the EI Quality Improvement Framework
2. Allocate time for EI Team Leaders to review documentation, assessment, reporting and monitoring on ACT to ensure fidelity

#### **Early Education**

1. Document plans for classroom observations and learning walks, and reflection and evaluation meetings to evidence fidelity of understanding and implementation of the school wide approach to communication, speed and listening.
2. Document plans for classroom observations and learning walks, and reflection and evaluation meetings to evidence fidelity of planned and agreed curriculum, assessments, and explicit teaching and learning within a play-based setting
3. Allocate time for EE Team Leaders to review documentation, assessment, reporting and monitoring to ensure fidelity

### **ACTIONS**

#### **Early Intervention**

1. Schedule and organise professional learning, reflection and supervision on strengthening understanding and embedding FPM model
2. Review and strengthen existing process and protocols to ensure follow-up for vulnerable and/or disengaging children and their families

#### **Early Education**

1. Review and strengthen existing processes and protocols to ensure follow-up for vulnerable and/or disengaging children and their families (Zones of Regulation, Play Therapy)