

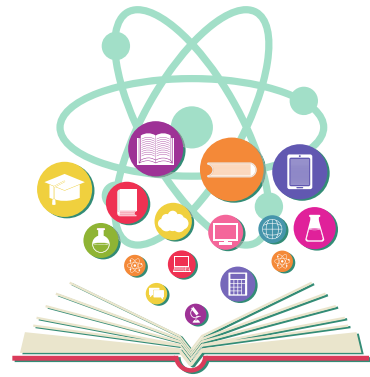
Aurora School Strategic Plan 2021-2025



Maximise learning growth for every child and the understanding and partnering of families in that learning

Improve the independence and advocacy of every child and their families in the learning environment.

Strengthen the engagement and wellbeing of every child.



KEY IMPROVEMENT STRATEGIES (KIS)



Improve parents/carers participation as active partners in their child's learning and development

Embed a culture of high expectations

Develop and embed a guaranteed and viable curriculum that caters for all children at their point of need



KEY IMPROVEMENT STRATEGIES (KIS)



Improve parent/carers participation as active partners in their child's learning and development.

Develop and Implement a team approach to build independence and self-advocacy in children

Further develop the effective transitions of children into and out of the EI and EE programs.



KEY IMPROVEMENT STRATEGIES (KIS)



Improve parent/carers participation as active partners in their child's learning and development

Build a whole school approach to the development of the wellbeing of children

Explore and develop wider community partnerships to optimise the support and pathways for every child